

PassPort 1

2/2020



PassPort Machine for Collating and Sewing of Printed Sheets

Features

- Suitable for (electronic) Machine Readable Travel Document (eMRTD) according to ISO and ICAO standards
- Highest productivity and reliable production in terms of quality and output
- Sophisticated technology for easy operation and maintenance
- Rigid design for increased life expectancy (>30 years)
- Modular layout in order to accommodate various types of passports and future upgrades

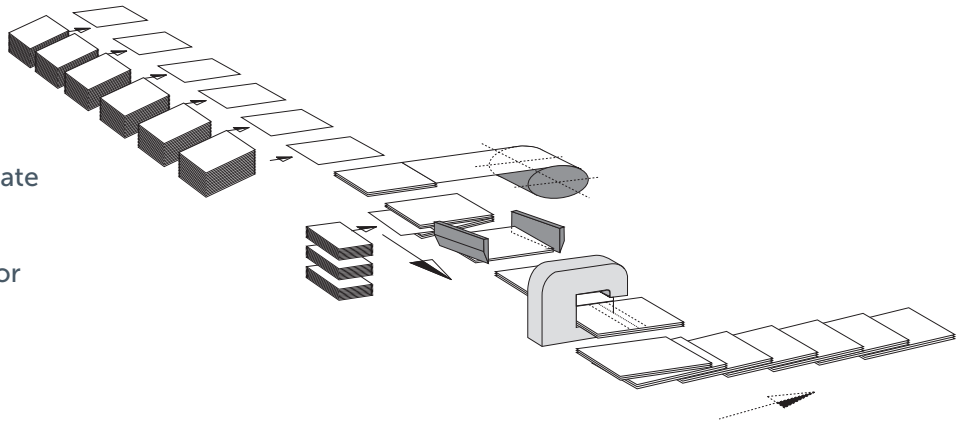


PassPort 1

The PassPort 1 machine binds passport or saving books by collating and sewing together different components. The machine is equipped with sewing machines for chain and/or interlock stitching. All styles of passports and e-passports can be manufactured by combining PassPort 1 with our PassPort 2, 3 and 4 machines.

Passport 1 base equipment

- Variable number of feeders
- Alignment of layers
- Reinforcing tape application
- Feeder for security film or polycarbonate cards with or without chip
- Trimming on the long side
- Sewing modules for chain stitch and/or interlock stitching easy to exchange
- Shingled delivery

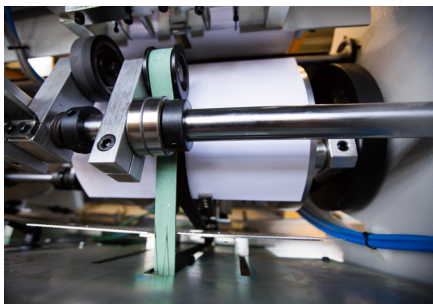


Add-on options

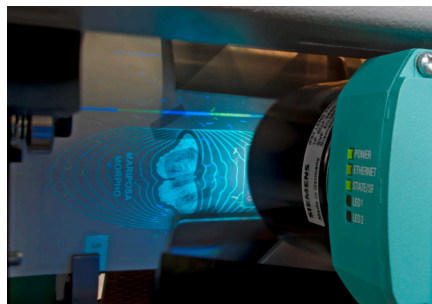
- Chip verification with automatic reject for defect polycarbonate cards with chip
- Registration of chip-UIDs used and other tracking features
- Track & trace system with Industry 4.0 capabilities
- Automatic bobbin changer for interlock stitching
- Inline connection to PassPort 2

Technical data

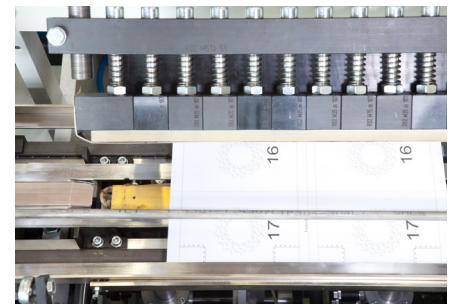
	PassPort 1 Chain stitching	PassPort 1 Interlock stitching
Cycles/min	Max. 25 / Optional 36 Layers (double-up)	Max. 20 / Optional 36 Layers (double-up)
Size range		



Collating



Pre-printed numbers sequence verification



Reinforcement tape application

World market leader for over 50 years