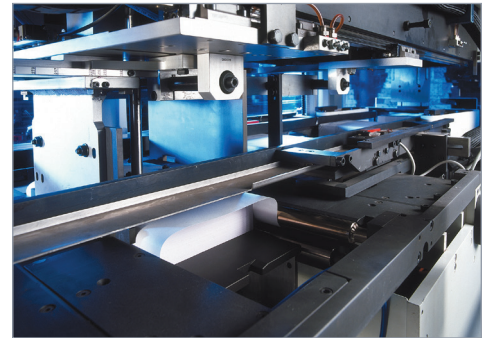
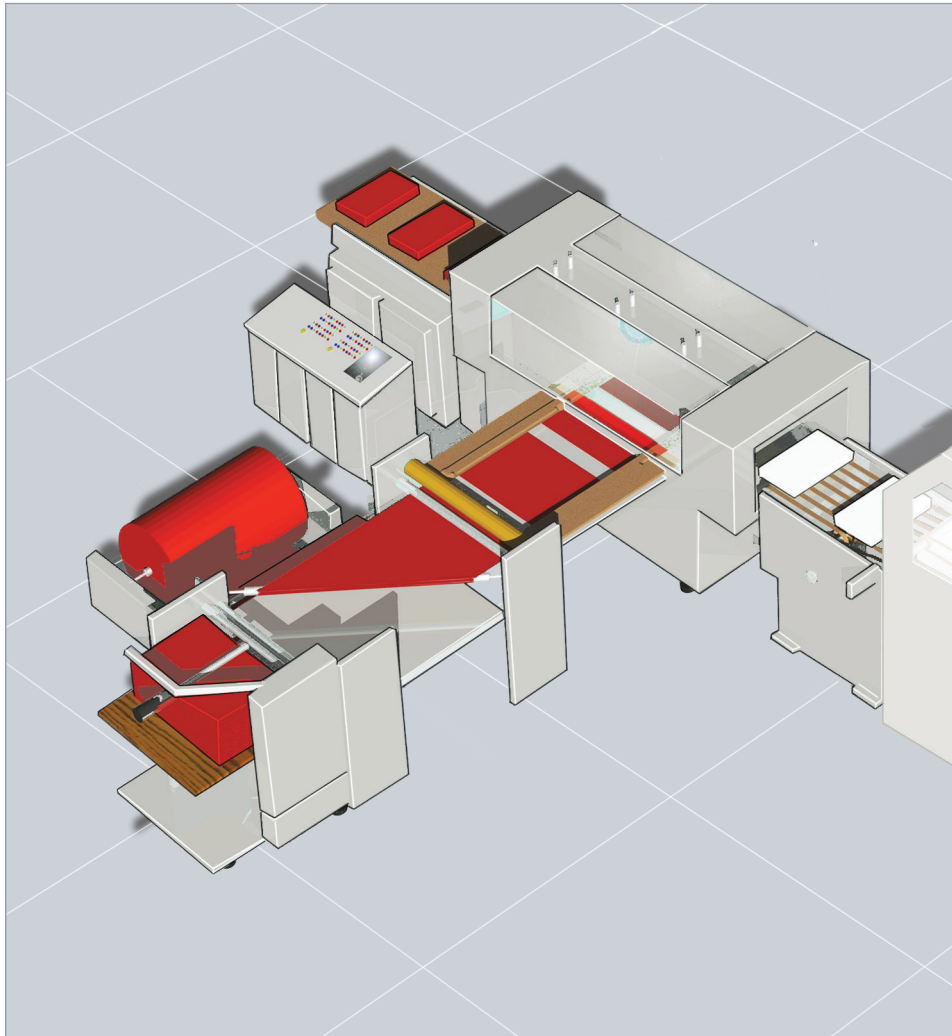


## CSW 25 / CSW 30 - Ream Wrappers



### Inline or stand-alone, size variable ream wrapping in Kraft paper from reel or sheet dispenser or in PP film from reel

A flexible cut-size ream wrapper, available in different models - CSW 25, CSW 30 - to fulfill all different production requirements. Sizes range from A4 and 8 1/2" x 11" to A3 and 11" x 17" with grammages ranging from 80 to 120 g/m<sup>2</sup>.

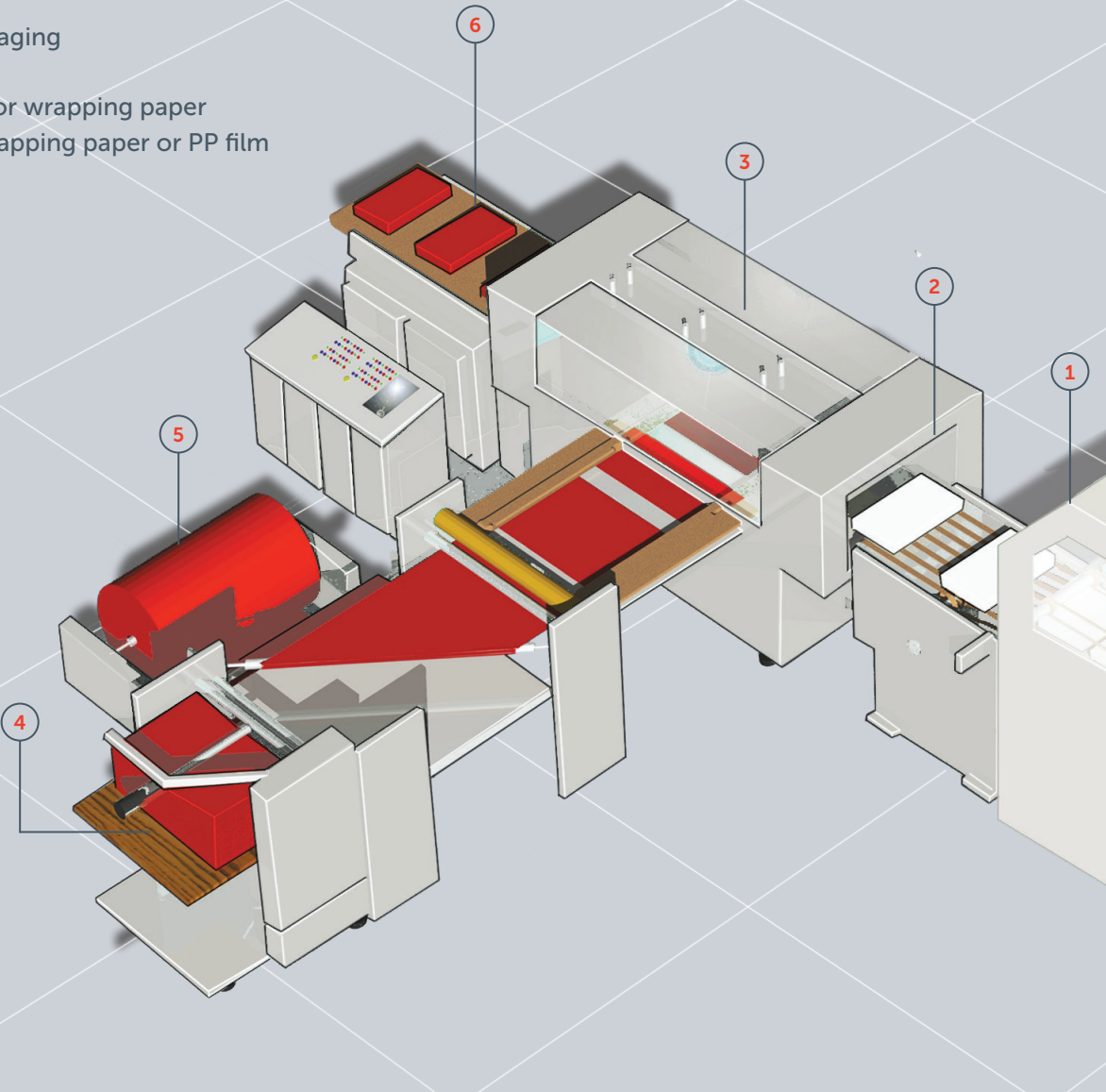
- Efficient wrapping for all common cut-size formats  
- from optional A5 up to A3 (up to 11" x 17")
- Production speeds from 25 reams (CSW 25), up to 30 reams (CSW 30) per minute
- Tightly wrapped reams in standard or coated Kraft paper or in PP film (CSW 30)
- Hot melt glueing - girth glueing done with optional pre-applied glue

#### Appropriate for...

- Paper converters
- Paper mills

Description

- 1 Separating
- 2 Infeed to packaging
- 3 Wrapping
- 4 Sheet feeder for wrapping paper
- 5 Unwind for wrapping paper or PP film
- 6 Delivery

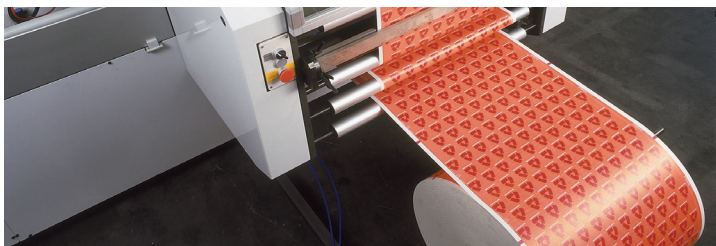


Advantages

- Off-line production possible - operation without synchronization
- Paper wrapping from reel - as well as for pre-printed reels with feeding in register
- Reel pick-up from floor (optional)
- Conventional cutter for perfect separation of the wrapping size
- Glue application to the web - easily accessible
- Most modern wrapping technology for perfectly wrapped reams also at top speeds
- All moving parts with overload protection
- Paper-mill suited machine concept - high reliability for 24/7 production, little maintenance & easy service
- Closed guards for gearing and moving cams provide safety protection and reduce sound levels

Options

- Unwinds for wrapping paper or PP film with different reel diameters
- Sheet feeder for pre-cut wrapping paper
- Hot sealing for PP film
- Print mark control for failures
- Control for incompletely closed reams
- Labeler
- Moving device for the whole wrapper - to change to another wrapping method, if needed



Technical Data		
	CSW 25	CSW 30
Ream dimensions max. / min.	297-432 mm / 11.7"-17" 182-257 mm / 7.2"-10.1"	320-460 mm / 12.5"-18.1" 182-257 mm / 7.2"-10.1"
Ream height	20 - 127 mm / 0.8"-5" (for A4 size)	20 - 127 mm / 0.8" - 5" (for A4 size) 13 - 20 mm / 0.51" - 0.8" (optional for A4 & similar)
Mech. speed - reams per minute (max.)	25 (A4 & similar sizes) 12 (A3 & similar sizes) (at max. 80 mm / 3.1" ream height)	30 (A4 & similar sizes) 15 (A3 & similar sizes) (at max. 80 mm / 3.1" ream height)
Wrapping paper weight	80 - 120 g/m <sup>2</sup>	80 - 120 g/m <sup>2</sup>
Wrapping paper roll dia.	650 mm / 25.6" option: up to 1,000 mm / 37.4"	650 mm / 25.6" option: up to 1,000 mm / 37.4"
Wrapping paper core dia.	70-75 mm / 2.75" - 3" option: 148-158 mm / 5.9"-6.25"	70-75 mm / 2.75" - 3" option: 148-158 mm / 5.9"-6.25"
Wrapping paper roll width	440 mm / 17.4" (min.) 790 mm / 31.1" (max.)	440 mm / 17.4" (min.) 825 mm / 32.4" (max.)
Wrapping materials	Standard Kraft paper, inside or outside poly-coated Kraft paper	Standard Kraft paper, inside or outside polycoated Kraft paper, polypropylene film
Size change time (e.g. A4 to A3, medium ream height)	40 min.	40 min.
Reel change time	2 min.	2 min.

## About BW Papersystems



BW Papersystems, part of the Barry-Wehmiller group, builds capital equipment, that converts paper into products used by consumers – every day, all over the world. We offer innovative technologies, service and parts plus, long-standing global experience, in the corrugating and

finishing; sheeting and packaging; stationery; book-binding and security-documents industries. Customers rely on us for machines to create items such as: corrugated boxes, folding cartons, passports, notebooks, copier paper, and more.

## BW Papersystems

1/2019

**BW Papersystems Hamburg GmbH**  
Langenkamp 8  
22880 Wedel GERMANY

t. +49 4103 7048-0  
info.hamburg@bwpapersystems.com  
[bwpapersystems.com](http://bwpapersystems.com)

barrywehmiller  
**bw**  
betterworld